



LBR iisy 11 R1300



Basic data

Kinematic type	Articulated robot
Cobot	Yes

Safety requirements	Category 3 and Performance Level d in accordance with EN ISO 13849-1
---------------------	----------------------------------------------------------------------

Technical data

Maximum reach	1300 mm
Rated payload	11 kg
Maximum payload	11.72 kg
Pose repeatability (ISO 9283)	± 0.05 mm
Number of axes	6
Mounting position	Floor; Ceiling; Wall; Desired angle
Footprint	275 mm x 275 mm
Weight	approx. 46.3 kg

Axis data

Motion range	
A1	±185 °
A2	-230 ° / 50 °
A3	±150 °
A4	±180 °
A5	±110 °
A6	±220 °
Speed with rated payload	
A1	200 °/s
A2	200 °/s
A3	200 °/s
A4	230 °/s
A5	260 °/s
A6	430 °/s

Operating conditions

Ambient temperature during operation	0 °C to 45 °C (273 K to 318 K)
--------------------------------------	--------------------------------

Protection rating

Protection rating (IEC 60529)	IP54
-------------------------------	------

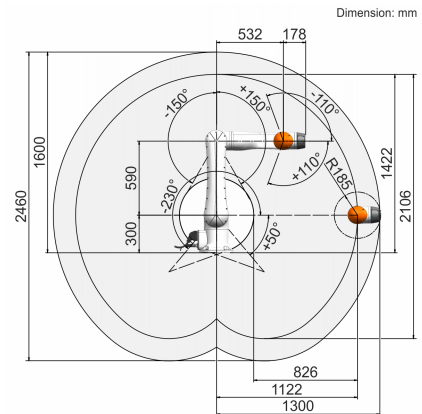
Controller

Controller	KR C5 micro
------------	-------------

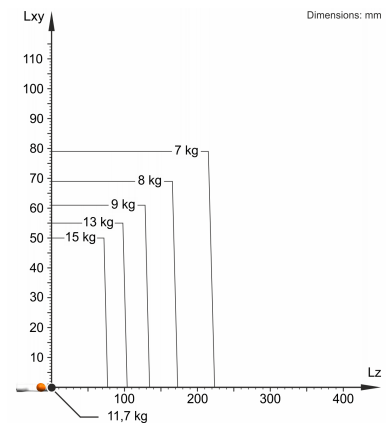
Certificates

ESD requirements	IEC61340-5-1; ANSI/ESD S20.20
------------------	-------------------------------

Workspace graphic

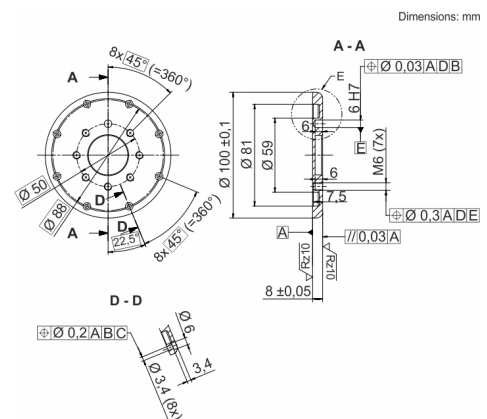


Payload diagram



The LBR iisy 11 R1300 is designed for a rated payload of 11 kg in order to optimize the dynamic performance of the robot. The maximum payload of 11.72 kg only applies if the position of the center of mass is 0 mm. The specific load case must be verified using KUKA.Load or KUKA.Compose. For further consultation, please contact KUKA Support.

Mounting flange



The robot has an internal energy supply system from axis 1 to axis 6 for use by the customer with 8 control cables and a 1 Gbit Ethernet cable.